

Meeting:	Safer Bromley Partnership Strategic Group
Date:	13th December 2012
Subject:	Performance Review 2011/2012 Quarter 2
Author:	Pratheepan Jeyapragasam, Senior Crime Analyst pratheepan.jeyapragasam@bromley.gov.uk

1 SUMMARY

- 1.1 This report is presented in order to update the Safer Bromley Partnership on the performance achieved against the targets set in the last year Community Safety plan 2012/13. The report provides the latest performance monitoring data to 30th September 2012 (Quarter 2).

2 RECOMMENDATION

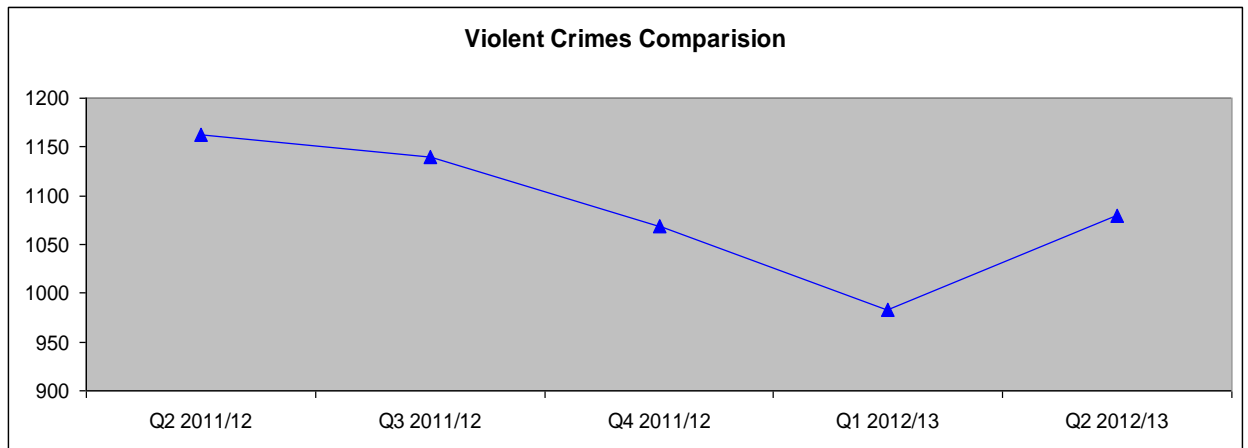
- 2.1 The Strategic Group is asked to:
- Note and comment on the performance information contained within the report.

3 BACKGROUND INFORMATION

- 3.1 This report provides an update of performance at the end of Quarter 2 in the delivery year 2012/2013. The performance picture across the range of Partnership activity continues to be healthy.
- 3.2 A summary of the “portfolio” of offences and Anti Social Behaviour that are included within these overarching targets is provided at Appendix 1. Reporting on individual crime types and detail of individual operations will only be made as a routine if achievement against set targets is not being made or, in some cases, where the measurable rates of individual offences or types of offending are significantly different from expected trends and predicted patterns etc. The management of these operational level issues will be dealt with outside of the Strategic Group at the combined Police/Partnership Tactical Tasking and Coordination Group chaired by the Borough Police Superintendent.

Performance Indicator 1- Reduction in Numbers of Violent Crimes Within Bromley

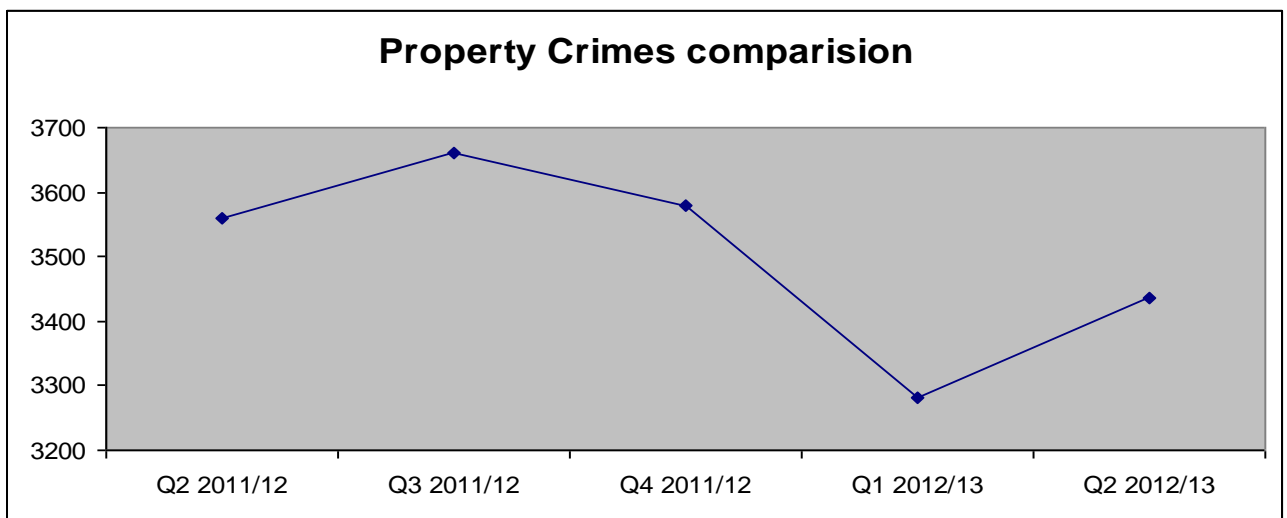
- 3.3 Offences related to Violent Crimes represent 21% (1079) of the Total Notifiable Offences in the period of Quarter 2 this year. The chart overleaf provides more detail.



3.4 During the period July to September 2012 there were 1079 Total Violent Offences reported to the Police. This represented a reduction of 84 (↓ 7%) offences compared with the same period previous year this includes a reduction of 44 Wounding/GBH offences and 104 Assault with Injury offences.

Performance Indicator 2- Reduction in Numbers of Property Crimes Within Bromley

3.5 Total offences to property Crimes represent 67% of the Total Notifiable Offences in the period of Quarter 2 this year.

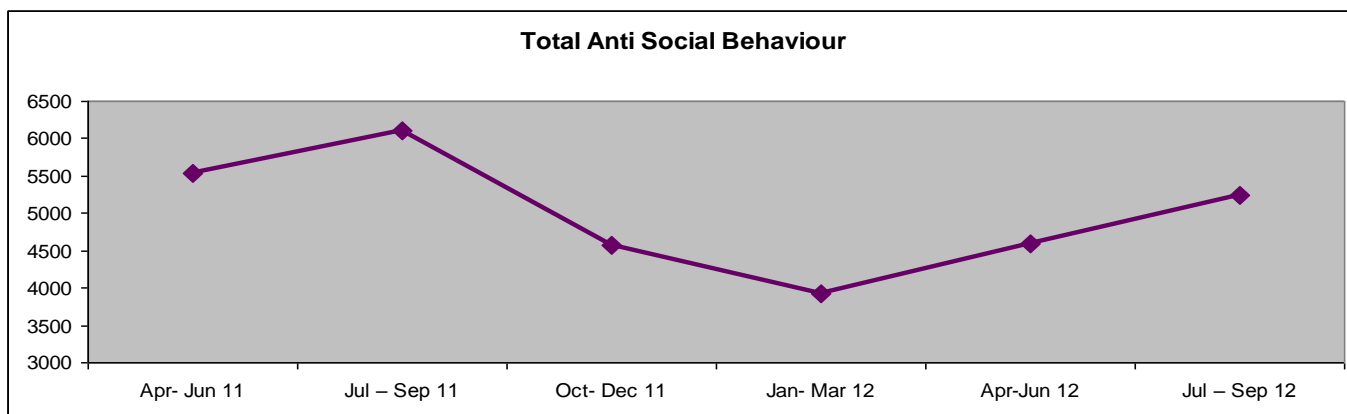


3.6 During the July to September period of 2012 there were 3,437 Total Property related Offences reported to the Police, this represented a decrease of 122 (↓3%) offences compared with the same period previous year.

3.7 During this reporting period, the Borough had experienced 732 Burglaries, 167 Robberies, 1947 Theft & Handling and 591 Criminal Damages. Whilst the reduction in levels of overall property crime are positive, it should be noted that, compared with the same period in the

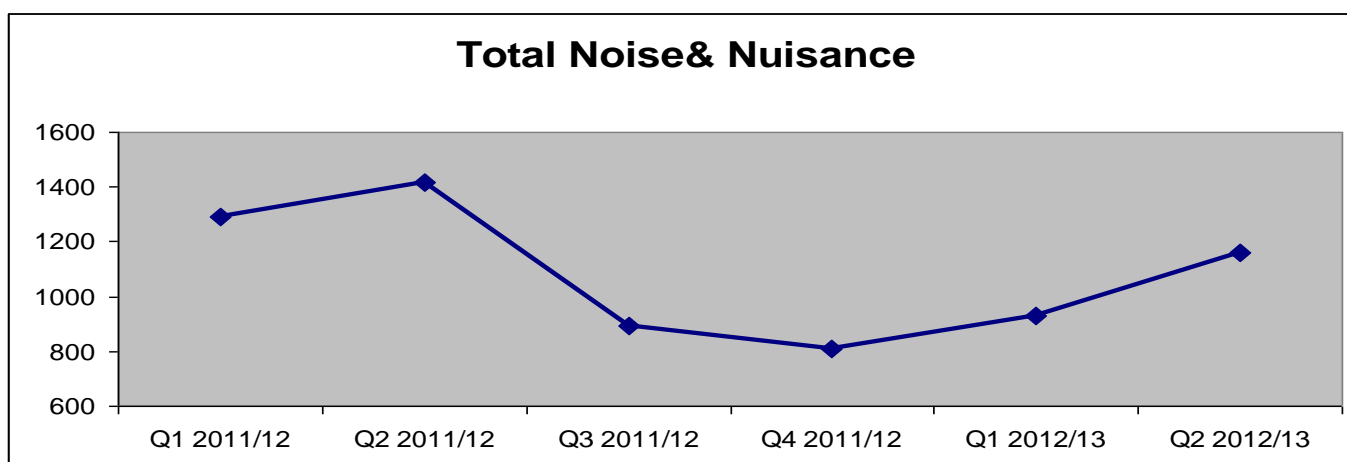
previous year, Robberies were increased by 2% (4 offences). In relation to Burglaries, Theft & Handling and Criminal Damage, all these offences are decreased. They were decreased by 2% (17 offences), 2% (42 offences) and 10% (67 offences) respectively.

Performance Indicator 3 Reduction in Levels of Recorded Anti Social Behaviour

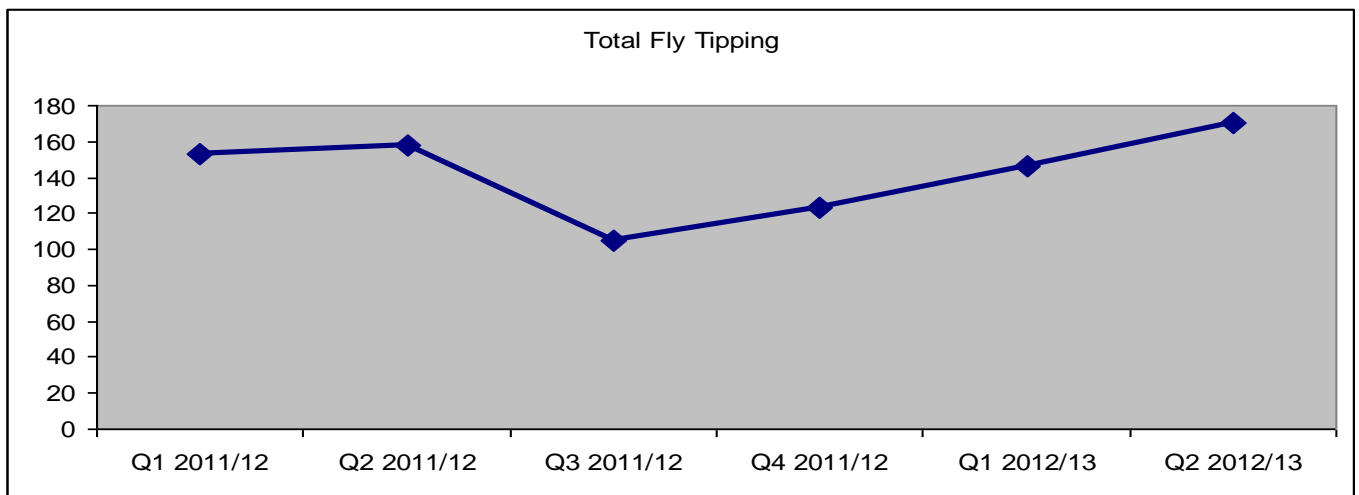


	Jul – Sep 11	Oct- Dec 11	Jan- Mar 12	Apr- Jun 12	Jul – Sep 12
Noise & Nuisance	1418	891	809	931	1162
Graffiti	1190	961	581	1108	787
Fly Tipping Investigation	158	105	123	146	170
ASB to Council	111	116	134	108	126
ASB to Police	3223	2497	2276	2291	2999
Total ABS	6100	4570	3923	4584	5244

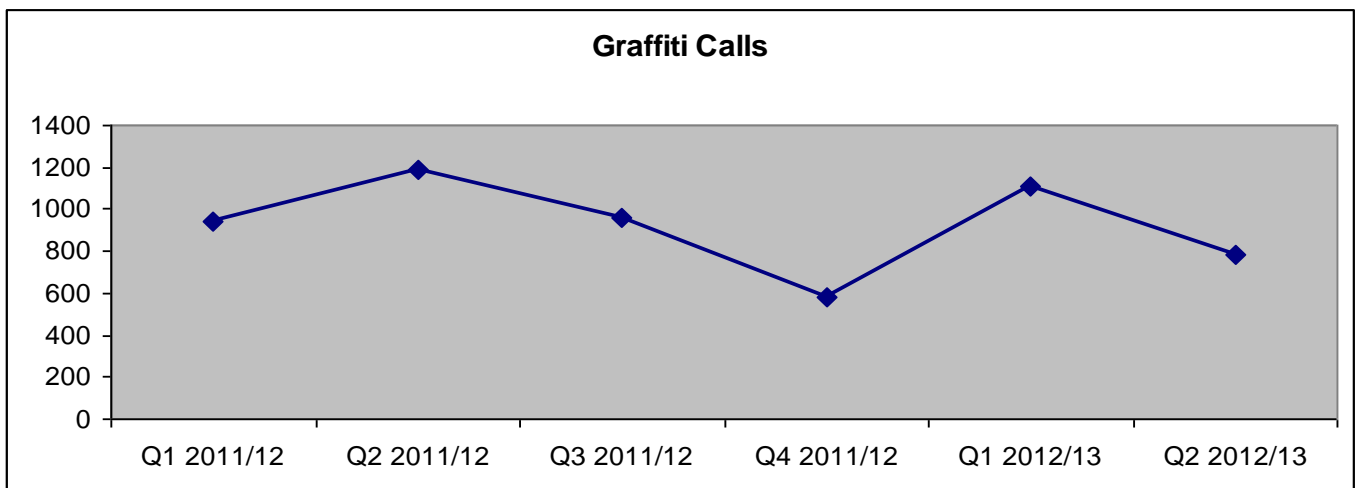
3.8 During the reporting period, the Borough has experienced a reduction of 856 (14%) incidents of ASB reported when compared with the same period last year.



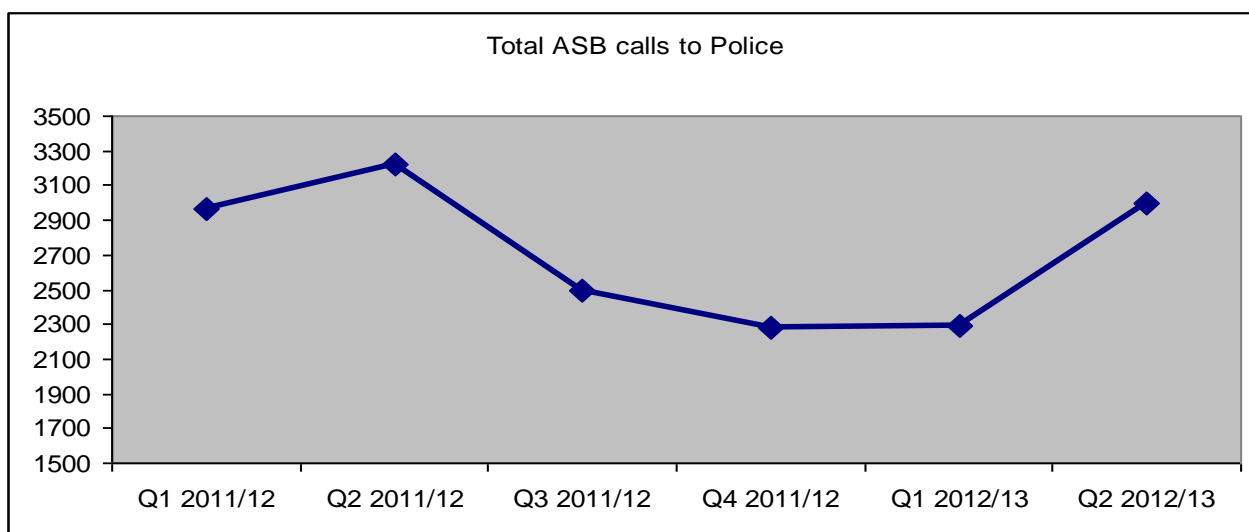
3.9 As can be seen from the figure above, during the reporting period (July to September 12), the Borough has experienced a reduction of 256 (18%) incidents of Noise and Nuisance ASB reported when compared with the same period last year. This includes a reduction of 84 Domestic Noise and 168 Noise incidents.



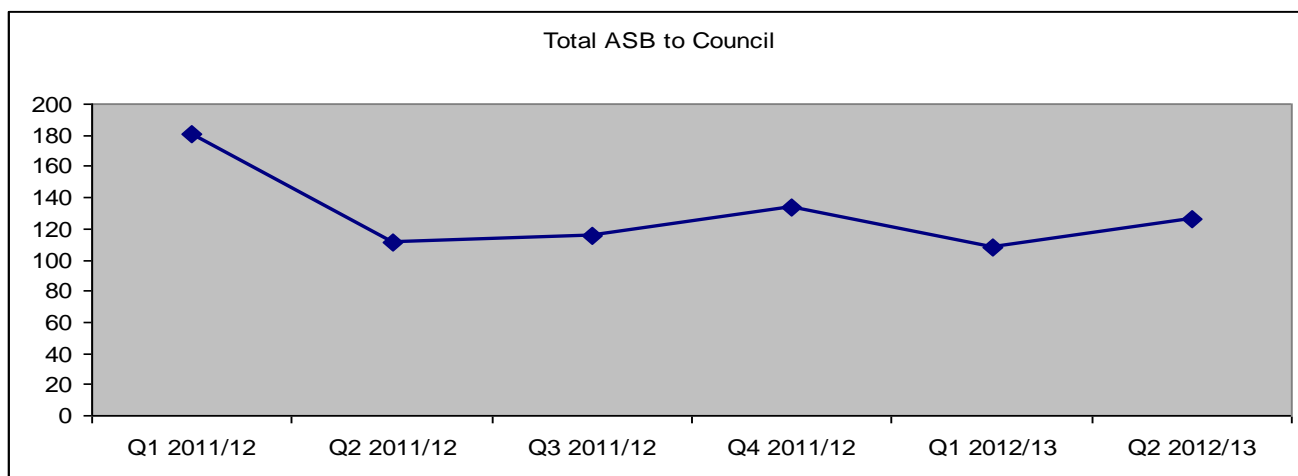
3.10 As can be seen from the figure above, during the reporting period, the Borough has experienced an increase of 12 incidents of Fly Tipping ASB reported when compared with the same period last year.



3.11 As can be seen from the figure above, during the reporting period, the Borough has experienced a reduction of 158 incidents of Graffiti ASB reported when compared with the same period last year.



3.12 During this reporting period it is noted that there was a reduction of 224 incidents reported to police regarding ASB compared with the same period last year.



3.13 During July to September 2012 the Borough has experienced a reduction of 15 incidents of ASB reported when compared with the same period last year.

Performance Indicator 4 Increased Confidence in the Fact that Bromley is a Safe Place

3.14 In relation to this performance indicator, (Question 74AB :) “To what extent do you agree that the police and local council are dealing with the ASB and crime issues that matter in this area” has not been published in the Q2 report by Met police.

3.15 In relation to perception about crime and ASB less Bromley residents (↓4% -compared with same period last year) are worried about ASB and crime in their area. See below



METROPOLITAN
POLICE

TOTAL POLICING

Public Attitude Survey 2012/13

Chapter 4: Perceptions about crime and ASB

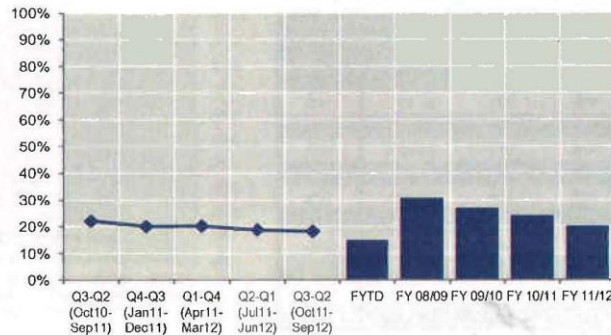
Q15: To what extent are you worried about ASB in the area?

Base: all respondents, excluding 'don't know'

Difference from
previous quarter
[Borough]: -1%

Difference from same
quarter in 2011/12
[Borough]: -4%

% worried (very/fairly)	Bromley			MPS
	%	Base	Confidence interval	%
Q3-Q2 (Oct10-Sep11)	22%	520	±3.56%	25%
Q4-Q3 (Jan11-Dec11)	20%	462	±3.65%	25%
Q1-Q4 (Apr11-Mar12)	20%	402	±3.92%	26%
Q2-Q1 (Jul11-Jun12)	19%	401	±3.82%	26%
Q3-Q2 (Oct11-Sep12)	18%	403	±3.76%	26%
FYTD	15%	201	±4.93%	27%
FY 08/09	31%	634	±3.59%	39%
FY 09/10	27%	640	±3.43%	25%
FY 10/11	24%	638	±3.32%	25%
FY 11/12	20%	402	±3.92%	26%



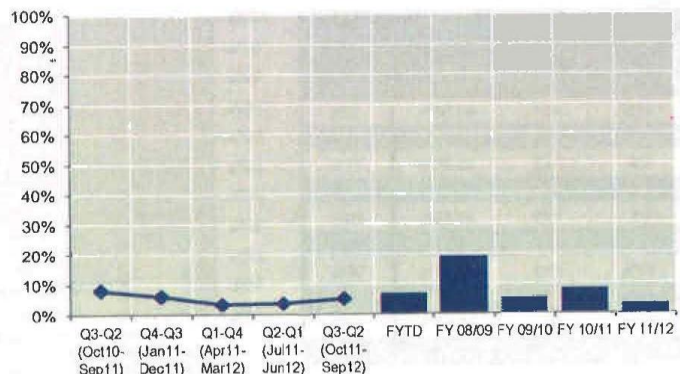
Perceptions of ASB

Q10A-G [composite]: Perceptions of ASB Base: all respondents, excluding those indicating 'don't know' to any of the seven composite factors

Difference from
previous quarter
[Borough]: +1%

Difference from same
quarter in 2011/12
[Borough]: -3%

% high level of worry	Bromley			MPS
	%	Base	Confidence interval	%
Q3-Q2 (Oct10-Sep11)	8%	479	±2.43%	11%
Q4-Q3 (Jan11-Dec11)	6%	429	±2.25%	10%
Q1-Q4 (Apr11-Mar12)	3%	366	±1.82%	9%
Q2-Q1 (Jul11-Jun12)	4%	363	±1.91%	10%
Q3-Q2 (Oct11-Sep12)	5%	369	±2.26%	11%
FYTD	7%	189	±3.61%	13%
FY 08/09	19%	505	±3.44%	23%
FY 09/10	5%	488	±2.02%	13%
FY 10/11	8%	551	±2.29%	12%
FY 11/12	3%	366	±1.82%	9%



APPENDIX 1

Performance Indicator Portfolios:

Violence Portfolio	
Offences	Supporting Measures
Violence with Injury	Domestic Violence
Common Assault	Domestic Violence Sanction Detection Rate
Harassment	Domestic Violence Arrest Rate
Threats/ Conspiracy to Kill	Serious Youth Violence
Blackmail	Knife Enabled Crime
Kidnapping/ False Imprisonment	Knife Enabled Crime Sanctioned Det. Rate
	Gun Crime
	Gun Crime Sanctioned Det. Rate
	Most Serious Violence
	Most Serious Violence Sanctioned Det. Rate

Property Portfolio
Offences:
Personal Robbery
Commercial Robbery
Total Robbery
Residential Burglary
Non-Residential Burglary
Theft/Taking Motor Vehicles
Theft From Motor Vehicles
Theft From Shops
Theft From Person
Theft of Pedal Cycles
Other Theft
Criminal Damage

Anti Social Behaviour Portfolio
ASB:
Noise & Nuisance
ASB to Council
Fly Tipping
ASB to Police
Graffiti